



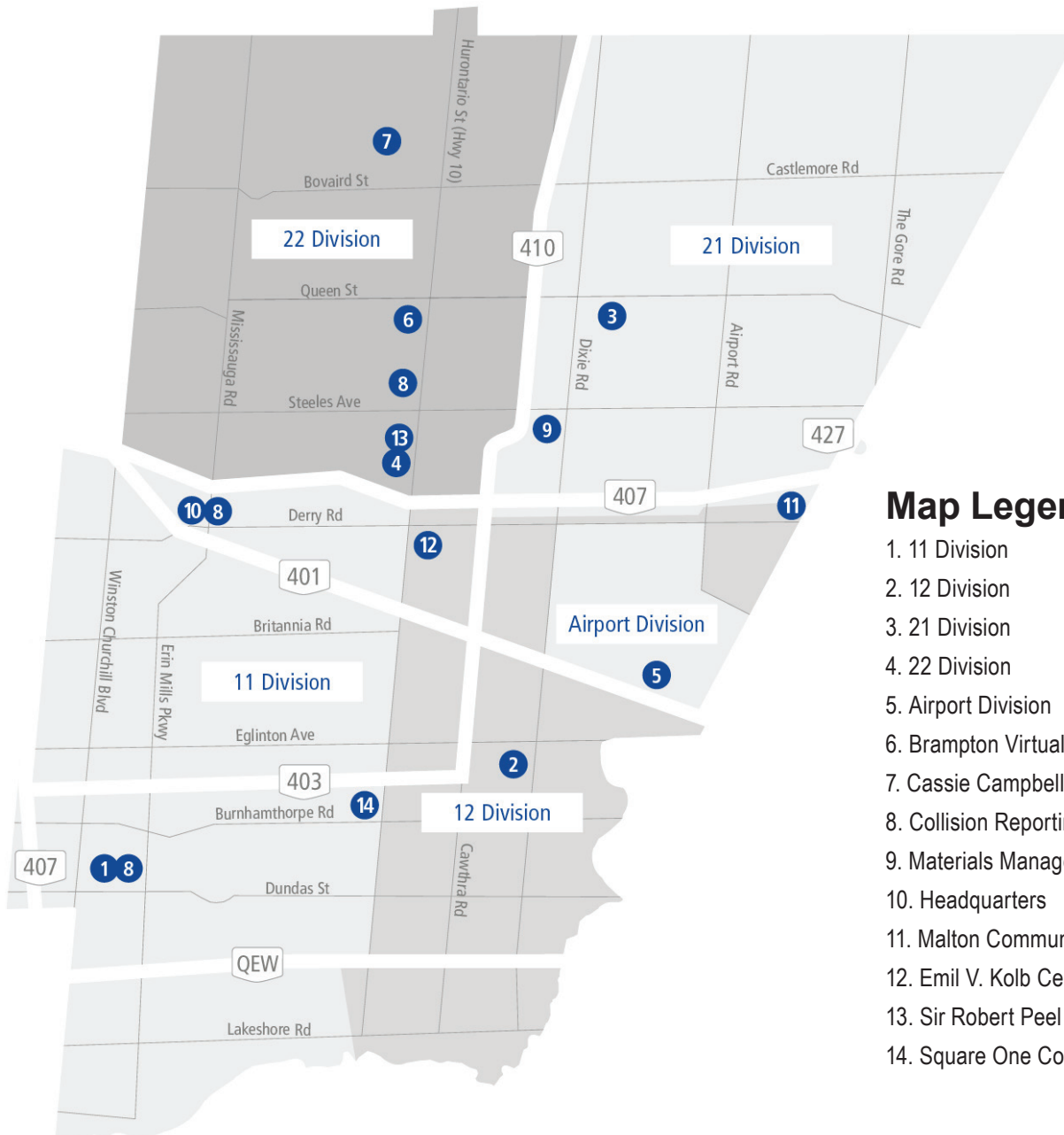
STATISTICAL REPORT

Five-Year Summary (2020-2024)

Table of Contents

02	DIVISIONAL BOUNDARIES
03	REGION STATISTICS
05	11 DIVISION STATISTICS
07	12 DIVISION STATISTICS
09	21 DIVISION STATISTICS
11	22 DIVISION STATISTICS
13	AIRPORT DIVISION STATISTICS
15	GLOSSARY OF TERMS

DIVISIONAL BOUNDARIES



Map Legend

1. 11 Division
2. 12 Division
3. 21 Division
4. 22 Division
5. Airport Division
6. Brampton Virtual Substation
7. Cassie Campbell Community Station
8. Collision Reporting Centre
9. Materials Management Centre
10. Headquarters
11. Malton Community Substation
12. Emil V. Kolb Centre for Police Excellence
13. Sir Robert Peel Centre
14. Square One Community Station

REGION STATISTICS

Crimes Against Persons	2020			2021			2022			2023			2024			Variance 2023 - 2024		
	Number	Percent Solved	Rate Per 100,000	Number	Percent Solved	Rate Per 100,000	Number	Percent Solved	Rate Per 100,000	Number	Percent Solved	Rate Per 100,000	Number	Percent Solved	Rate Per 100,000	In Actuals	In Actuals	In Rates
																(#)	(%)	(%**)
Crimes Against Persons - TOTAL	8,574	79.9	583.1	9,214	76.4	615.5	11,445	71.1	752.3	12,836	68.7	830.5	14,643	64.1	932.8	1,807	14.1	12.3
Homicide Occurrences	17	88.2	1.2	14	85.7	0.9	30	66.7	2.0	23	82.6	1.5	19	78.9	1.2	-4	-17.4	-18.7
<i>Homicide Victims</i>	18	~	~	14	~	~	30	~	~	23	~	~	20	~	~	-3	~	~
Attempted Murder	26	100.0	1.8	23	69.6	1.5	46	67.4	3.0	39	82.1	2.5	35	88.6	2.2	-4	-10.3	-11.6
Sexual Violations	913	72.7	62.1	1,067	68.1	71.3	1,157	71.1	76.1	1,257	71.2	81.3	1,353	67.2	86.2	96	7.6	6.0
Assaults (Non-Sexual)	4,683	88.3	318.5	4,992	84.8	333.4	6,336	79.2	416.5	7,023	76.5	454.4	7,938	72.1	505.7	915	13.0	11.3
Robberies*	651	46.7	44.3	581	41.3	38.8	771	39.7	50.7	833	38.1	53.9	997	32.0	63.5	164	19.7	17.8
Robberies with Weapons	391	47.3	26.6	299	39.5	20.0	469	40.7	30.8	524	40.8	33.9	588	32.5	37.5	64	12.2	10.5
Robberies without Weapons	260	45.8	17.7	282	43.3	18.8	302	38.1	19.9	309	33.3	20.0	407	31.2	25.9	98	31.7	29.7
Other Crimes Against Persons*	2,284	74.8	155.3	2,537	71.5	169.5	3,105	62.6	204.1	3,659	59.5	236.7	4,301	55.4	274.0	642	17.5	15.7

Crimes Against Property	2020			2021			2022			2023			2024			Variance 2023 - 2024		
	Number	Percent Solved	Rate Per 100,000	Number	Percent Solved	Rate Per 100,000	Number	Percent Solved	Rate Per 100,000	Number	Percent Solved	Rate Per 100,000	Number	Percent Solved	Rate Per 100,000	In Actuals	In Actuals	In Rates
																(#)	(%)	(%**)
Crimes Against Property - TOTAL	23,325	25.7	1,586.2	22,399	21.6	1,496.2	28,543	19.1	1,876.2	34,985	17.0	2,263.5	37,972	17.8	2,418.8	2,987	8.5	6.9
Break and Enter	2,403	26.3	163.4	2,015	22.8	134.6	2,266	24.7	148.9	2,842	12.5	183.9	2,852	16.7	181.7	10	0.4	-1.2
Residence	1,131	18.4	76.9	791	25.4	52.8	860	21.5	56.5	1,368	10.5	88.5	1,503	13.2	95.7	135	9.9	8.2
Business	997	37.9	67.8	1,030	21.7	68.8	1,239	27.8	81.4	1,256	14.8	81.3	1,181	20.7	75.2	-75	-6.0	-7.4
Other*	275	16.7	18.7	194	18.0	13.0	167	18.6	11.0	218	11.0	14.1	168	19.0	10.7	-50	-22.9	-24.1
Theft Motor Vehicle	3,376	6.8	229.6	4,119	5.4	275.1	6,065	4.0	398.7	8,322	2.8	538.4	7,231	3.1	460.6	-1,091	-13.1	-14.5
Theft Over \$5,000	447	15.4	30.4	568	16.5	37.9	710	9.2	46.7	670	11.2	43.3	768	12.5	48.9	98	14.6	12.9
Theft Under \$5,000	10,905	20.7	741.6	9,581	15.4	640.0	11,828	15.8	777.5	13,254	18.1	857.5	16,083	17.9	1,024.5	2,829	21.3	19.5
Possession of Property Obtained by Crime	950	97.7	64.6	745	100.0	49.8	831	103.1	54.6	838	101.8	54.2	827	111.7	52.7	-11	-1.3	-2.8
Frauds	1,918	36.9	130.4	2,251	24.5	150.4	3,088	16.7	203.0	4,744	11.5	306.9	5,292	12.6	337.1	548	11.6	9.8
Mischief	3,263	35.7	221.9	3,077	42.0	205.5	3,691	36.2	242.6	4,235	34.8	274.0	4,811	30.5	306.5	576	13.6	11.8
Arson	63	25.4	4.3	43	25.6	2.9	64	25.0	4.2	80	28.8	5.2	108	34.3	6.9	28	35.0	32.9

Drug Violations	2020			2021			2022			2023			2024			Variance 2023 - 2024		
	Number	Percent Solved	Rate Per 100,000	Number	Percent Solved	Rate Per 100,000	Number	Percent Solved	Rate Per 100,000	Number	Percent Solved	Rate Per 100,000	Number	Percent Solved	Rate Per 100,000	In Actuals	In Actuals	In Rates
																(#)	(%)	(%**)
Drug Violations - TOTAL	1,633	99.4	111.1	1,580	99.6	105.5	1,422	98.1	93.5	1,315	98.0	85.1	1,325	98.2	84.4	10	0.8	-0.8
Trafficking, Production or Distribution	490	100.0	33.3	403	100.5	26.9	327	96.0	21.5	362	98.1	23.4	403	98.0	25.7	41	11.3	9.6
Possession	1,143	99.1	77.7	1,177	99.3	78.6	1,095	98.7	72.0	953	98.0	61.7	922	98.3	58.7	-31	-3.3	-4.7

Persons Charged	2020			2021			2022			2023			2024			Variance 2023 - 2024	
	Adults	Youths	Total Charged	Adults	Youths	Total Charged	Adults	Youths	Total Charged	Adults	Youths	Total Charged	Adults	Youths	Total Charged	In Actuals	In Actuals
																(#)	(%)
Persons Charged - TOTAL	12,394	694	13,088	11,615	501	12,116	12,057	685	12,742	12,513	974	13,487	12,870	933	13,803	316	2.3
Crimes Against Persons	4,270	372	4,642	4,275	309	4,584	4,800	465	5,265	5,042	622	5,664	5,249	590	5,839	175	3.1
Crimes Against Property	3,469	195	3,664	2,879	123	3,002	3,084	126	3,210	3,271	212	3,483	3,433	198	3,631	148	4.2
Drugs	1,086	15	1,101	1,079	7	1,086	906	19	925	700	10	710	818	17	835	125	17.6
Criminal Driving Offences	1,230	11	1,241	1,236	12	1,248	1,168	4	1,172	1,202	11	1,213	1,155	16	1,171	-42	-3.5

* See Glossary of Terms for violations included in this category or more details.
 ** Variances in rate percentage may differ due to rounding.

REGION STATISTICS

Traffic Management	2020	2021	2022	2023	2024	Variance 2023 - 2024		
	Number	Number	Number	Number	Number	In Actuals (#)	In Actuals (%)	In Rates (%)**
Criminal Driving Offences - TOTAL	2,652	2,859	2,241	2,498	2,536	38	1.5	0.0
Impaired Driving (Alcohol/Drugs)	989	1,082	1,011	1,023	922	-101	-9.9	-11.3
Fail/Refuse Breath/Blood Sample	103	119	137	131	138	7	5.3	3.7
Dangerous Operation	430	546	414	537	585	48	8.9	7.3
Other CC Traffic Offences*	1,130	1,112	679	807	891	84	10.4	8.7
Traffic Enforcement (Highway Traffic Act) - TOTAL	44,853	51,311	44,484	43,719	47,205	3,486	8.0	6.3
HTA Charges*	38,238	43,605	37,287	38,274	42,107	3,833	10.0	8.3
Seatbelt	425	394	405	390	513	123	31.5	29.5
Careless Driving	1,072	851	639	676	844	168	24.9	22.9
Speeding	13,335	16,517	13,221	8,229	8,233	4	0.0	-1.5
Use Electronic Devices	975	928	609	662	774	112	16.9	15.1
Disobey Traffic Light	1,232	1,623	1,322	1,355	1,530	175	12.9	11.2
Fail to Stop at Stop Sign	1,612	2,881	2,953	1,547	2,345	798	51.6	49.2
Invalid Permit	7,276	4,232	4,685	7,703	6,568	-1,135	-14.7	-16.1
Other HTA Charges*	12,311	16,179	13,453	17,712	21,300	3,588	20.3	18.4
HTA Cautions	6,615	7,706	7,197	5,445	5,098	-347	-6.4	-7.8
Motor Vehicle Collisions - TOTAL***	16,576	19,419	33,875	40,457	42,733	2,276	5.6	4.0
Reportable Collisions	9,476	9,522	20,247	22,974	28,738	5,764	25.1	23.2
Fatal Collisions	37	31	34	30	25	-5	-16.7	-18.0
Fatalities	43	34	37	31	28	-3	-9.7	-11.1
Personal Injury	1,189	1,065	1,280	1,615	1,751	136	8.4	6.7
Property Damage	8,250	8,426	18,933	21,329	26,962	5,633	26.4	24.5
Non-Reportable Collisions	7,100	9,897	13,628	17,483	13,995	-3,488	-20.0	-21.2

Additional Organizational Statistics	2020	2021	2022	2023	2024	Variance 2023 - 2024	
	Number	Number	Number	Number	Number	In Actuals (#)	In Actuals (%)
Citizen Initiated Events*	226,333	230,369	236,218	238,458	235,539	-2,919	-1.2
Immediate Response Incidents	66,898	66,655	72,047	80,000	76,339	-3,661	-4.6
Alarm Program							
Alarm Requests	10,711	9,654	11,041	11,972	12,121	149	1.2
Valid Alarms (Based On Arrival)	3.7%	3.2%	4.0%	3.1%	3.1%	~	0.0
Family Disputes*	8,012	7,093	6,601	6,508	6,624	116	1.8
Intimate Partner Disputes*	10,495	9,259	9,270	9,570	9,480	-90	-0.9
Shooting Victims*	41	47	58	50	58	8	16.0
Investigated Rounds Discharged (Estimated)	519	494	652	664	1,253	589	88.7
Stabbing Victims*	174	166	215	186	179	-7	-3.8
Missing Persons Occurrences	1,239	1,418	1,851	1,893	2,009	116	6.1
Elder/Vulnerable Person (includes Abuse) - Request for Assistance	2,911	2,598	3,047	4,250	7,287	3,037	71.5
Non-Criminal Requests for Assistance	5,658	5,675	4,652	3,757	3,708	-49	-1.3
Lawless Public Behaviour							
Lawless Behaviour Incidents	17,844	15,848	15,690	16,519	15,956	-563	-3.4
Liquor License Act Charges	792	730	780	670	783	113	16.9
School Occurrences*	507	407	1,067	1,408	1,590	182	12.9
Crimes Against Persons	97	83	305	420	453	33	7.9
Crimes Against Property	63	39	107	122	136	14	11.5
Other CCC Occurrences	26	16	59	83	100	17	20.5
Drugs	6	1	2	2	3	1	50.0
Non-Criminal*	315	268	594	781	898	117	15.0
Non-Criminal Mental Health Violations							
Suicides*	68	78	75	88	63	-25	-28.4
Attempt Suicide*	333	342	365	402	502	100	24.9
Mental Health - Request for Assistance*	5,549	6,306	6,309	6,686	6,891	205	3.1

* See Glossary of Terms for violations included in this category or more details.

** Variances in rate percentage may differ due to rounding.

***2023 data restated.

11 DIVISION STATISTICS

Crimes Against Persons	2020			2021			2022			2023			2024		
	Number	Percent Solved	Rate Per 100,000	Number	Percent Solved	Rate Per 100,000	Number	Percent Solved	Rate Per 100,000	Number	Percent Solved	Rate Per 100,000	Number	Percent Solved	Rate Per 100,000
Crimes Against Persons - TOTAL	2,161	76.4	393.0	2,338	73.1	419.4	3,010	68.9	535.3	3,217	65.9	567.1	3,894	60.6	680.5
Homicide Occurrences	5	120.0	0.9	4	100.0	0.7	13	53.8	2.3	6	100.0	1.1	4	75.0	0.7
<i>Homicide Victims</i>	5	~	~	4	~	~	13	~	~	6	~	~	4	~	~
Attempted Murder	3	166.7	0.5	7	85.7	1.3	12	66.7	2.1	10	60.0	1.8	7	100.0	1.2
Sexual Violations	256	67.2	46.6	267	56.2	47.9	304	70.7	54.1	316	65.5	55.7	340	62.9	59.4
Assaults (Non-Sexual)	1,145	86.9	208.2	1,268	81.9	227.5	1,629	77.5	289.7	1,716	75.5	302.5	2,122	69.8	370.9
Robberies*	169	42.6	30.7	140	29.3	25.1	206	37.4	36.6	195	34.9	34.4	301	28.6	52.6
Robberies with Weapons	112	44.6	20.4	82	26.8	14.7	127	36.2	22.6	120	37.5	21.2	174	29.9	30.4
Robberies without Weapons	57	38.6	10.4	58	32.8	10.4	79	39.2	14.0	75	30.7	13.2	127	26.8	22.2
Other Crimes Against Persons*	583	68.8	106.0	652	71.8	117.0	846	59.8	150.4	974	55.1	171.7	1,120	50.6	195.7

Crimes Against Property	2020			2021			2022			2023			2024		
	Number	Percent Solved	Rate Per 100,000	Number	Percent Solved	Rate Per 100,000	Number	Percent Solved	Rate Per 100,000	Number	Percent Solved	Rate Per 100,000	Number	Percent Solved	Rate Per 100,000
Crimes Against Property - TOTAL	6,987	26.1	1,270.5	6,118	21.2	1,097.6	8,366	15.8	1,487.7	9,511	15.8	1,676.6	11,428	18.7	1997.3
Break and Enter	819	19.8	148.9	621	17.4	111.4	618	16.7	109.9	827	10.5	145.8	1,040	13.9	181.8
Residence	365	14.0	66.4	229	18.3	41.1	270	20.4	48.0	483	7.0	85.1	619	6.8	108.2
Business	355	28.7	64.6	317	18.3	56.9	299	15.1	53.2	295	17.6	52.0	374	24.1	65.4
Other*	99	9.1	18.0	75	10.7	13.5	49	6.1	8.7	49	2.0	8.6	47	27.7	8.2
Theft Motor Vehicle	690	8.1	125.5	984	5.3	176.5	1,444	3.3	256.8	2,028	2.2	357.5	1,643	4.4	287.1
Theft Over \$5,000	113	18.6	20.5	113	19.5	20.3	148	9.5	26.3	170	9.4	30.0	196	17.9	34.3
Theft Under \$5,000	3,643	24.7	662.4	2,852	18.8	511.6	4,108	13.7	730.5	3,831	17.2	675.3	5,261	21.8	919.5
Possession of Property Obtained by Crime	181	100.6	32.9	114	105.3	20.5	150	100.0	26.7	160	103.8	28.2	180	108.3	31.5
Frauds	573	32.3	104.2	630	21.3	113.0	886	12.4	157.6	1,375	10.2	242.4	1,747	8.1	305.3
Mischief	957	32.8	174.0	790	41.3	141.7	1,003	33.2	178.4	1,106	34.5	195.0	1,331	29.5	232.6
Arson	11	9.1	2.0	14	7.1	2.5	9	44.4	1.6	14	21.4	2.5	30	30.0	5.2

Drug Violations	2020			2021			2022			2023			2024		
	Number	Percent Solved	Rate Per 100,000	Number	Percent Solved	Rate Per 100,000	Number	Percent Solved	Rate Per 100,000	Number	Percent Solved	Rate Per 100,000	Number	Percent Solved	Rate Per 100,000
Drug Violations - TOTAL	229	100.0	41.6	184	100.5	33.0	182	94.5	32.4	170	96.5	30.0	193	99.0	33.7
Trafficking, Production or Distribution	99	100.0	18.0	68	101.5	12.2	55	87.3	9.8	49	93.9	8.6	63	98.4	11.0
Possession	130	100.0	23.6	116	100.0	20.8	127	97.6	22.6	121	97.5	21.3	130	99.2	22.7

* See Glossary of Terms for violations included in this category or more details.

11 DIVISION STATISTICS

Traffic Management	2020	2021	2022	2023	2024
	Number	Number	Number	Number	Number
Criminal Driving Offences - TOTAL	593	709	481	552	607
Impaired Driving (Alcohol/Drugs)	207	250	208	225	184
Fail/Refuse Breath/Blood Sample	20	25	32	26	31
Dangerous Operation	69	113	95	141	174
Other CC Traffic Offences*	297	321	146	160	218
Motor Vehicle Collisions					
Reportable and Non-Reportable	5,085	5,601	9,230	11,188	11,511

Additional Organizational Statistics	2020	2021	2022	2023	2024
	Number	Number	Number	Number	Number
Citizen Initiated Events*	62,467	62,599	62,776	64,018	63,913
Immediate Response Events	18,514	18,171	18,851	21,087	19,973
Family Disputes*	2,248	2,146	2,098	2,069	2,167
Intimate Partner Disputes*	2,758	2,421	2,424	2,491	2,489
Elder/Vulnerable Person (includes Abuse) - Request for Assistance	903	862	1,014	1,426	2,637
Non-Criminal Requests for Assistance	1,656	1,623	1,340	1,020	1,015
Lawless Public Behaviour					
Lawless Behaviour Incidents	4,589	4,036	3,895	3,998	3,711
Liquor License Act Charges	199	166	252	138	55
School Occurrences*	168	152	370	451	518
Crimes Against Persons	24	25	81	129	125
Crimes Against Property	25	20	49	41	59
Other CCC Occurrences	6	3	21	16	21
Drugs	4	1	0	1	0
Non-Criminal*	109	103	219	264	313
Non-Criminal Mental Health Violations					
Suicides*	26	32	21	23	18
Attempt Suicide*	112	130	130	156	156
Mental Health - Request for Assistance*	1,799	2,038	2,096	2,052	2,280

* See Glossary of Terms for violations included in this category or more details.

12 DIVISION STATISTICS

Crimes Against Persons	2020			2021			2022			2023			2024		
	Number	Percent Solved	Rate Per 100,000	Number	Percent Solved	Rate Per 100,000	Number	Percent Solved	Rate Per 100,000	Number	Percent Solved	Rate Per 100,000	Number	Percent Solved	Rate Per 100,000
Crimes Against Persons - TOTAL	1,577	76.5	660.2	1,863	73.9	771.5	2,090	67.3	863.1	2,565	65.0	1,056.3	2,634	60.0	1081.7
Homicide Occurrences	2	100.0	0.8	3	66.7	1.2	3	100.0	1.2	7	57.1	2.9	3	100.0	1.2
<i>Homicide Victims</i>	2	~	~	3	~	~	3	~	~	7	~	~	3	~	~
Attempted Murder	8	62.5	3.3	6	33.3	2.5	8	62.5	3.3	14	64.3	5.8	4	125.0	1.6
Sexual Violations	195	74.4	81.6	228	76.3	94.4	220	67.3	90.9	264	71.6	108.7	281	63.3	115.4
Assaults (Non-Sexual)	821	83.8	343.7	976	79.7	404.2	1,180	73.9	487.3	1,386	70.7	570.8	1,382	69.7	567.5
Robberies*	129	41.9	54.0	129	40.3	53.4	146	37.0	60.3	180	33.3	74.1	192	25.5	78.8
Robberies with Weapons	83	45.8	34.7	64	35.9	26.5	86	43.0	35.5	115	35.7	47.4	121	26.4	49.7
Robberies without Weapons	46	34.8	19.3	65	44.6	26.9	60	28.3	24.8	65	29.2	26.8	70	22.9	28.7
Other Crimes Against Persons*	422	73.9	176.7	521	70.6	215.8	533	60.8	220.1	714	59.7	294.0	772	49.4	317.0

Crimes Against Property	2020			2021			2022			2023			2024		
	Number	Percent Solved	Rate Per 100,000	Number	Percent Solved	Rate Per 100,000	Number	Percent Solved	Rate Per 100,000	Number	Percent Solved	Rate Per 100,000	Number	Percent Solved	Rate Per 100,000
Crimes Against Property - TOTAL	5,171	20.2	2,164.9	5,178	18.6	2,144.4	5,849	16.1	2,415.4	8,541	12.7	3,517.3	8,135	17.6	3,340.7
Break and Enter	591	32.5	247.4	598	18.4	247.6	623	26.0	257.3	776	12.0	319.6	744	20.6	305.5
Residence	202	28.2	84.6	165	21.8	68.3	148	17.6	61.1	229	11.4	94.3	283	14.1	116.2
Business	309	37.2	129.4	376	16.5	155.7	410	30.5	169.3	468	11.1	192.7	402	25.4	165.1
Other*	80	25.0	33.5	57	21.1	23.6	65	16.9	26.8	79	19.0	32.5	59	18.6	24.2
Theft Motor Vehicle	863	4.3	361.3	1,061	3.3	439.4	1,565	3.1	646.3	2,068	2.0	851.6	1,738	2.5	713.7
Theft Over \$5,000	156	12.2	65.3	237	21.9	98.1	262	7.6	108.2	238	12.2	98.0	248	7.7	101.8
Theft Under \$5,000	2,334	13.5	977.1	2,022	11.9	837.4	1,972	10.3	814.4	3,233	9.8	1331.4	3,015	17.0	1238.1
Possession of Property Obtained by Crime	165	97.6	69.1	171	100.0	70.8	160	105.0	66.1	210	98.6	86.5	247	110.5	101.4
Frauds	375	29.1	157.0	403	23.8	166.9	496	15.1	204.8	916	10.4	377.2	1,054	13.4	432.8
Mischief	662	31.1	277.2	677	38.3	280.4	752	34.2	310.6	1,085	27.4	446.8	1,068	26.4	438.6
Arson	25	12.0	10.5	9	11.1	3.7	19	31.6	7.8	15	40.0	6.2	21	38.1	8.6

Drug Violations	2020			2021			2022			2023			2024		
	Number	Percent Solved	Rate Per 100,000	Number	Percent Solved	Rate Per 100,000	Number	Percent Solved	Rate Per 100,000	Number	Percent Solved	Rate Per 100,000	Number	Percent Solved	Rate Per 100,000
Drug Violations - TOTAL	247	98.4	103.4	320	98.8	132.5	268	99.3	110.7	279	98.6	114.9	377	96.8	154.8
Trafficking, Production or Distribution	111	100.0	46.5	75	100.0	31.1	77	100.0	31.8	98	98.0	40.4	124	93.5	50.9
Possession	136	97.1	56.9	245	98.4	101.5	191	99.0	78.9	181	98.9	74.5	253	98.4	103.9

* See Glossary of Terms for violations included in this category or more details.

12 DIVISION STATISTICS

Traffic Management	2020	2021	2022	2023	2024
	Number	Number	Number	Number	Number
Criminal Driving Offences - TOTAL	508	602	509	551	610
Impaired Driving (Alcohol/Drugs)	197	231	258	218	221
Fail/Refuse Breath/Blood Sample	29	24	37	27	35
Dangerous Operation	82	106	68	133	149
Other CC Traffic Offences*	200	241	146	173	205
Motor Vehicle Collisions Reportable and Non-Reportable	3,337	3,748	6,617	7,940	8,341

Additional Organizational Statistics	2020	2021	2022	2023	2024
	Number	Number	Number	Number	Number
Citizen Initiated Events*	49,188	49,472	48,914	49,768	46,730
Immediate Response Events	14,338	14,410	15,191	16,751	15,474
Family Disputes*	1,395	1,190	1,009	1,057	1,044
Intimate Partner Disputes*	2,020	1,772	1,707	1,681	1,611
Elder/Vulnerable Person (includes Abuse) - Request for Assistance	624	517	613	946	1,517
Non-Criminal Requests for Assistance	1,169	1,052	819	652	648
Lawless Public Behaviour					
Lawless Behaviour Incidents	3,839	3,734	3,455	3,739	3,342
Liquor License Act Charges	188	281	263	248	293
School Occurrences*	70	71	174	211	264
Crimes Against Persons	4	16	48	54	73
Crimes Against Property	8	7	10	28	21
Other CCC Occurrences	3	2	8	18	14
Drugs	0	0	1	0	1
Non-Criminal*	55	46	107	111	155
Non-Criminal Mental Health Violations					
Suicides*	11	17	15	23	18
Attempt Suicide*	63	62	67	60	85
Mental Health - Request for Assistance*	1,019	1,128	1,179	1,185	1,214

* See Glossary of Terms for violations included in this category or more details.

21 DIVISION STATISTICS

Crimes Against Persons	2020			2021			2022			2023			2024		
	Number	Percent Solved	Rate Per 100,000	Number	Percent Solved	Rate Per 100,000	Number	Percent Solved	Rate Per 100,000	Number	Percent Solved	Rate Per 100,000	Number	Percent Solved	Rate Per 100,000
Crimes Against Persons - TOTAL	1,853	84.2	631.1	1,956	80.5	653.2	2,544	74.7	826.9	2,917	70.4	923.5	3,421	66.9	1055.6
Homicide Occurrences	2	150.0	0.7	4	75.0	1.3	7	85.7	2.3	4	100.0	1.3	3	33.3	0.9
<i>Homicide Victims</i>	2	~	~	4	~	~	7	~	~	4	~	~	3	~	~
Attempted Murder	5	120.0	1.7	4	50.0	1.3	12	83.3	3.9	7	114.3	2.2	10	80.0	3.1
Sexual Violations	173	84.4	58.9	235	78.3	78.5	228	79.4	74.1	265	71.7	83.9	308	76.9	95.0
Assaults (Non-Sexual)	1,048	91.5	356.9	1,060	88.5	354.0	1,386	83.5	450.5	1,554	78.9	492.0	1,832	73.5	565.3
Robberies*	133	53.4	45.3	124	51.6	41.4	196	45.4	63.7	202	48.0	64.0	212	39.6	65.4
Robberies with Weapons	80	53.8	27.2	64	53.1	21.4	122	48.4	39.7	132	49.2	41.8	130	43.1	40.1
Robberies without Weapons	53	52.8	18.0	60	50.0	20.0	74	40.5	24.1	70	45.7	22.2	81	34.6	25.0
Other Crimes Against Persons*	492	76.0	167.6	529	72.5	176.7	715	64.1	232.4	885	59.7	280.2	1,056	58.0	325.9

Crimes Against Property	2020			2021			2022			2023			2024		
	Number	Percent Solved	Rate Per 100,000	Number	Percent Solved	Rate Per 100,000	Number	Percent Solved	Rate Per 100,000	Number	Percent Solved	Rate Per 100,000	Number	Percent Solved	Rate Per 100,000
Crimes Against Property - TOTAL	4,194	25.6	1,428.3	4,518	19.9	1,508.8	5,519	22.7	1,793.9	7,104	19.4	2,249.1	7,572	17.0	2,336.5
Break and Enter	337	40.4	114.8	284	22.5	94.8	336	25.9	109.2	506	10.3	160.2	447	12.8	137.9
Residence	176	24.4	59.9	126	24.6	42.1	118	17.8	38.4	242	7.9	76.6	229	17.5	70.7
Business	141	60.3	48.0	133	19.5	44.4	198	28.8	64.4	223	13.5	70.6	193	7.3	59.6
Other*	20	40.0	6.8	25	28.0	8.3	20	45.0	6.5	41	7.3	13.0	25	12.0	7.7
Theft Motor Vehicle	767	6.9	261.2	1,025	4.4	342.3	1,391	3.0	452.1	1,937	3.2	613.2	1,815	2.0	560.1
Theft Over \$5,000	91	16.5	31.0	99	12.1	33.1	145	11.0	47.1	100	12.0	31.7	156	13.5	48.1
Theft Under \$5,000	1,747	17.8	595.0	1,818	12.7	607.1	2,054	21.1	667.6	2,563	24.7	811.4	3,032	17.5	935.6
Possession of Property Obtained by Crime	228	97.4	77.6	193	98.4	64.5	230	107.0	74.8	202	101.5	64.0	171	107.0	52.8
Frauds	395	33.7	134.5	412	27.2	137.6	637	21.8	207.0	1,019	12.9	322.6	994	15.9	306.7
Mischief	617	31.9	210.1	675	35.9	225.4	710	40.1	230.8	764	36.4	241.9	930	31.1	287.0
Arson	12	58.3	4.1	12	16.7	4.0	16	25.0	5.2	13	30.8	4.1	27	29.6	8.3

Drug Violations	2020			2021			2022			2023			2024		
	Number	Percent Solved	Rate Per 100,000	Number	Percent Solved	Rate Per 100,000	Number	Percent Solved	Rate Per 100,000	Number	Percent Solved	Rate Per 100,000	Number	Percent Solved	Rate Per 100,000
Drug Violations - TOTAL	452	99.8	153.9	485	99.6	162.0	509	99.0	165.4	438	97.7	138.7	333	98.8	102.8
Trafficking, Production or Distribution	74	100.0	25.2	97	100.0	32.4	72	98.6	23.4	70	98.6	22.2	70	97.1	21.6
Possession	378	99.7	128.7	388	99.5	129.6	437	99.1	142.0	368	97.6	116.5	263	99.2	81.2

* See Glossary of Terms for violations included in this category or more details.

21 DIVISION STATISTICS

Traffic Management	2020	2021	2022	2023	2024
	Number	Number	Number	Number	Number
Criminal Driving Offences - TOTAL	549	614	470	582	575
Impaired Driving (Alcohol/Drugs)	207	246	194	248	218
Fail/Refuse Breath/Blood Sample	21	28	25	30	30
Dangerous Operation	90	112	101	107	108
Other CC Traffic Offences*	231	228	150	197	219
Motor Vehicle Collisions					
Reportable and Non-Reportable	3,450	4,366	8,000	8,954	9,893

Additional Organizational Statistics	2020	2021	2022	2023	2024
	Number	Number	Number	Number	Number
Citizen Initiated Events*	42,534	44,957	45,454	45,931	47,037
Immediate Response Events	13,020	12,921	14,151	15,389	14,813
Family Disputes*	1,893	1,651	1,618	1,570	1,555
Intimate Partner Disputes*	2,271	1,988	2,036	2,141	2,114
Elder/Vulnerable Person (includes Abuse) - Request for Assistance	577	524	685	851	1,259
Non-Criminal Requests for Assistance	1,021	914	677	539	542
Lawless Public Behaviour					
Lawless Behaviour Incidents	3,141	2,658	2,605	2,847	2,878
Liquor License Act Charges	123	130	123	91	157
School Occurrences*	127	65	222	339	376
Crimes Against Persons	37	13	78	122	122
Crimes Against Property	13	5	20	15	22
Other CCC Occurrences	11	5	19	27	32
Drugs	0	0	0	1	2
Non-Criminal*	66	42	105	174	198
Non-Criminal Mental Health Violations					
Suicides*	9	11	16	20	9
Attempt Suicide*	63	67	64	70	98
Mental Health - Request for Assistance*	1,109	1,228	1,358	1,455	1,448

* See Glossary of Terms for violations included in this category or more details.

22 DIVISION STATISTICS

Crimes Against Persons	2020			2021			2022			2023			2024		
	Number	Percent Solved	Rate Per 100,000	Number	Percent Solved	Rate Per 100,000	Number	Percent Solved	Rate Per 100,000	Number	Percent Solved	Rate Per 100,000	Number	Percent Solved	Rate Per 100,000
Crimes Against Persons - TOTAL	2,882	81.7	742.7	2,931	78.2	735.0	3,611	73.1	882.5	3,886	72.7	926.0	4,456	68.0	1036.1
Homicide Occurrences	8	44.4	2.1	3	100.0	0.8	7	57.1	1.7	6	66.7	1.4	9	88.9	2.1
<i>Homicide Victims</i>	9	~	~	3	~	~	7	~	~	6	~	~	10	~	~
Attempted Murder	10	90.0	2.6	5	100.0	1.3	14	50.0	3.4	7	114.3	1.7	14	78.6	3.3
Sexual Violations	262	67.6	67.5	318	65.4	79.7	367	70.6	89.7	365	77.3	87.0	378	68.0	87.9
Assaults (Non-Sexual)	1,623	89.8	418.2	1,619	87.8	406.0	2,041	81.0	498.8	2,229	80.1	531.2	2,487	77.9	578.2
Robberies*	215	47.9	55.4	183	44.8	45.9	213	39.0	52.1	249	35.7	59.3	288	34.0	67.0
Robberies with Weapons	114	45.6	29.4	86	44.2	21.6	127	36.2	31.0	156	40.4	37.2	160	31.3	37.2
Robberies without Weapons	101	50.5	26.0	97	45.4	24.3	86	43.0	21.0	93	28.0	22.2	128	37.5	29.8
Other Crimes Against Persons*	764	79.2	196.9	803	71.1	201.4	969	65.3	236.8	1,030	63.6	245.4	1,280	62.0	297.6

Crimes Against Property	2020			2021			2022			2023			2024		
	Number	Percent Solved	Rate Per 100,000	Number	Percent Solved	Rate Per 100,000	Number	Percent Solved	Rate Per 100,000	Number	Percent Solved	Rate Per 100,000	Number	Percent Solved	Rate Per 100,000
Crimes Against Property - TOTAL	6,486	29.2	1,671.4	6,200	25.0	1,554.9	7,937	21.9	1,939.6	8,444	21.8	2,012.2	9,443	18.4	2,195.6
Break and Enter	643	21.3	165.7	504	34.5	126.4	679	30.0	165.9	722	16.8	172.0	614	19.4	142.8
Residence	384	14.8	99.0	270	34.1	67.7	320	25.0	78.2	414	15.7	98.7	368	20.4	85.6
Business	184	39.1	47.4	200	37.5	50.2	326	35.6	79.7	261	19.5	62.2	211	18.5	49.1
Other*	75	10.7	19.3	34	20.6	8.5	33	24.2	8.1	47	10.6	11.2	35	14.3	8.1
Theft Motor Vehicle	962	6.7	247.9	946	7.8	237.2	1,335	4.8	326.2	1,708	4.2	407.0	1,668	3.0	387.8
Theft Over \$5,000	76	15.8	19.6	99	7.1	24.8	112	8.0	27.4	116	12.1	27.6	120	13.3	27.9
Theft Under \$5,000	2,974	23.6	766.4	2,794	16.2	700.7	3,451	18.3	843.4	3,252	22.7	774.9	4,238	15.7	985.4
Possession of Property Obtained by Crime	345	96.2	88.9	234	98.3	58.7	246	97.6	60.1	226	104.0	53.9	188	118.6	43.7
Frauds	499	42.9	128.6	725	22.6	181.8	967	15.6	236.3	1,266	12.6	301.7	1,250	14.4	290.6
Mischief	973	44.3	250.7	891	49.7	223.4	1,128	38.3	275.7	1,123	43.7	267.6	1,337	35.2	310.9
Arson	14	28.6	3.6	7	85.7	1.8	19	10.5	4.6	31	25.8	7.4	28	39.3	6.5

Drug Violations	2020			2021			2022			2023			2024		
	Number	Percent Solved	Rate Per 100,000	Number	Percent Solved	Rate Per 100,000	Number	Percent Solved	Rate Per 100,000	Number	Percent Solved	Rate Per 100,000	Number	Percent Solved	Rate Per 100,000
Drug Violations - TOTAL	630	99.2	162.3	527	99.4	132.2	412	98.1	100.7	396	99.2	94.4	366	97.0	85.1
Trafficking, Production or Distribution	156	100.0	40.2	129	99.2	32.4	102	96.1	24.9	128	100.0	30.5	112	98.2	26.0
Possession	474	98.9	122.1	398	99.5	99.8	310	98.7	75.8	268	98.9	63.9	254	96.5	59.1

* See Glossary of Terms for violations included in this category or more details.

22 DIVISION STATISTICS

Traffic Management	2020	2021	2022	2023	2024
	Number	Number	Number	Number	Number
Criminal Driving Offences - TOTAL	948	857	716	763	695
Impaired Driving (Alcohol/Drugs)	363	325	327	324	285
Fail/Refuse Breath/Blood Sample	32	37	42	45	41
Dangerous Operation	180	196	137	140	143
Other CC Traffic Offences*	373	299	210	254	226
Motor Vehicle Collisions Reportable and Non-Reportable	4,529	5,511	9,587	11,389	11,854

Additional Organizational Statistics	2020	2021	2022	2023	2024
	Number	Number	Number	Number	Number
Citizen Initiated Events*	64,883	64,880	65,209	62,910	62,333
Immediate Response Events	18,709	18,334	18,700	20,833	19,767
Family Disputes*	2,438	2,067	1,818	1,767	1,810
Intimate Partner Disputes*	3,351	2,953	2,954	3,071	3,111
Elder/Vulnerable Person (includes Abuse) - Request for Assistance	798	680	694	964	1,702
Non-Criminal Requests for Assistance	1,264	1,407	1,093	727	725
Lawless Public Behaviour					
Lawless Behaviour Incidents	5,474	4,372	4,006	4,260	4,048
Liquor License Act Charges	235	114	99	165	236
School Occurrences*	142	119	301	407	432
Crimes Against Persons	32	29	98	115	133
Crimes Against Property	17	7	28	38	34
Other CCC Occurrences	6	6	11	25	33
Drugs	2	0	1	0	0
Non-Criminal*	85	77	163	229	232
Non-Criminal Mental Health Violations					
Suicides*	22	17	23	21	16
Attempt Suicide*	93	82	101	114	161
Mental Health - Request for Assistance*	1,552	1,824	1,561	1,838	1,798

* See Glossary of Terms for violations included in this category or more details.

AIRPORT DIVISION STATISTICS

Crimes Against Persons	2020		2021		2022		2023		2024	
	Number	Percent Solved	Number	Percent Solved	Number	Percent Solved	Number	Percent Solved	Number	Percent Solved
Crimes Against Persons - TOTAL	37	64.9	50	76.0	81	65.4	128	63.3	115	61.7
Homicide	0	~	0	~	0	~	0	~	0	~
Attempted Murder	0	~	0	~	0	~	0	~	0	~
Sexual Violations	7	100.0	4	100.0	10	50.0	22	77.3	17	58.8
Assaults (Non-Sexual)	22	63.6	32	81.3	55	72.7	81	61.7	69	66.7
Robberies*	1	0.0	2	0.0	0	~	1	100.0	3	66.7
Other Crimes Against Persons*	7	42.9	12	66.7	16	50.0	24	54.2	26	50.0

Crimes Against Property	2020		2021		2022		2023		2024	
	Number	Percent Solved	Number	Percent Solved	Number	Percent Solved	Number	Percent Solved	Number	Percent Solved
Crimes Against Property - TOTAL	354	33.1	259	31.7	647	19.0	1,048	9.5	976	11.1
Break and Enter	3	33.3	1	100.0	0	~	0	~	0	~
Business	3	33.3	1	100.0	0	~	0	~	0	~
Other*	0	~	0	~	0	~	0	~	0	~
Theft Motor Vehicle	64	26.6	80	16.3	296	11.1	521	2.3	310	8.1
Theft Over \$5,000	9	22.2	12	8.3	28	10.7	37	10.8	38	7.9
Theft Under \$5,000	177	14.1	74	16.2	185	15.7	294	13.6	435	5.3
Possession of Property Obtained by Crime	6	83.3	4	100.0	8	100.0	12	91.7	13	115.4
Frauds	48	108.3	55	61.8	45	55.6	45	24.4	60	26.7
Mischief	46	30.4	32	50.0	85	29.4	137	14.6	120	21.7
Arson	1	100.0	1	100	0	~	2	100.0	0	~

Drug Violations	2020		2021		2022		2023		2024	
	Number	Percent Solved	Number	Percent Solved	Number	Percent Solved	Number	Percent Solved	Number	Percent Solved
Drug Violations - TOTAL	7	100.0	21	100.0	12	91.7	10	90.0	17	100.0
Trafficking, Production or Distribution	0	~	4	100.0	0	~	2	50.0	4	100.0
Possession	7	100.0	17	100.0	12	91.7	8	100.0	13	100.0

* See Glossary of Terms for violations included in this category or more details.

AIRPORT DIVISION STATISTICS

Traffic Management	2020	2021	2022	2023	2024
	Number	Number	Number	Number	Number
Criminal Driving Offences - TOTAL	20	12	23	19	10
Impaired Driving (Alcohol/Drugs)	4	4	6	2	1
Fail/Refuse Breath/Blood Sample	1	1	0	1	0
Dangerous Operation	0	1	2	5	2
Other CC Traffic Offences*	15	6	15	11	7
Motor Vehicle Collisions Reportable and Non-Reportable	175	193	439	531	527

Additional Organizational Statistics	2020	2021	2022	2023	2024
	Number	Number	Number	Number	Number
Citizen Initiated Events*	7,260	8,461	13,366	13,233	14,055
Immediate Response Events	2,317	2,819	5,039	5,759	6,147
Family Disputes*	8	6	16	20	17
Intimate Partner Disputes*	21	19	45	73	58
Elder/Vulnerable Person (includes Abuse) - Request for Assistance	5	6	28	44	112
Non-Criminal Requests for Assistance	315	394	496	601	569
Lawless Public Behaviour	801	1,048	1,729	1,675	1,977
Non-Criminal Mental Health Violations					
Mental Health - Request for Assistance*	53	73	83	124	117

* See Glossary of Terms for violations included in this category or more details.

GLOSSARY OF TERMS

Disclaimer: Crime statistics presented are based on a download of data from the Records Management System. Statistics presented are a “snapshot” in time and can change for various reasons (i.e. incidents being reclassified, later reporting of incidents). The system is continuously being updated and as a result, some changes to statistics published in previous statistical reports may occur. It should be noted that statistics provided in this report may differ from those used by Statistics Canada and other police agencies who may only count the most serious violation in a criminal incident. Caution should be taken when making comparison of data. **CAD Incidents:** CAD Incident information is sourced from the Computer Aided Dispatch (CAD) system and provides detailed workload information.

Offence Counts: Based on the number of actual occurrences (excludes unfounded) classified under each category. Offences may be counted under more than one classification. Divisional totals may not add up to the Regional total.

CRIMES AGAINST PERSONS

Robbery Counts: Total Robberies include Robbery with Intent to Steal Firearm.

Other Crimes Against Persons: Includes Violations Resulting in the Deprivation of Freedom, Indecent Harassing Communication, Criminal Harassment, and Uttering Threats, Criminal Negligence Causing Death, Other Related Offences Causing Death and also includes Other Violent Violations: Conspiracy to Commit Murder, Extortion, Intimidation of Justice System Participant, Intimidation of Non-Justice Participant, Explosives Causing Death/Bodily Harm, Arson - Disregard for Human Life, and Other Violent Violations.

CRIMES AGAINST PROPERTY

Break and Enter - Other: Includes Apartment Locker, Other, Break and Enter to Motor Vehicle to Steal Firearm, and with Intent to Steal Firearm.

TRAFFIC MANAGEMENT

Other CC Traffic Offences: Includes Failure to Stop and Operation While Prohibited violations.

HTA (Highway Traffic Act) Charges: Includes Traffic notices issued.

Other HTA Charges: Includes Other Traffic Offences such as Driver's License (Validity, Carrying on Person, Suspended, Cancelled, etc.), Equipment Obstructing View, Unsafe Vehicle, Commercial Motor Vehicle (Inspection and Maintenance), Stop at Through Highway, Pedestrian Crossover, Turning at Intersections, Signalling Turns and Stops, Overtaking and Passing Rules, Approaching or Following Emergency Vehicles, and Signs to be Obeyed.

ADDITIONAL ORGANIZATIONAL STATISTICS

Citizen Initiated Incidents: Examples include Alarms, Break & Enter, Disturbance, Domestic Violence, Mental Health Issues, Motor Vehicle Collisions, etc.

Shooting Victims: Reflects victims(s) hit by projectiles in a shooting occurrence. These include the reasons of criminal intent, non-criminal intent, suicide and unknown. A "firearm" refers to a "real" gun and this excludes all fake guns such as BB gun, air gun, starter pistols, etc.

Stabbings: Reflects stabbing occurrences where a knife or other sharp object was used. Victims are the number of person(s) injured by a knife or other sharp object.

Family Disputes, Intimate Partner Disputes, Suicides, Attempt Suicides and Mental Health - Request for Assistance are based on reported data.

School Occurrences: Based on all violation codes associated to Occurrence. Occurrences recorded as taking place at a school, Mon to Fri, between 7 am and 7 pm (excluding July & August). 2020 - 2022 data is reflective of school closures due to the Covid-19 pandemic. Non-Criminal includes: Federal traffic act and provincial statutes.

A SAFER COMMUNITY TOGETHER

PeelPolice.ca